



Overview

Inductive sensors

The right sensors for your applications



Highlights

- High precision and temperature stability
- Sensing distance from 1 mm up to 40 mm
- Flush, quasi-flush, non-flush versions, NPN or PNP, NO or NC output
- Fully protected against short-circuit, reverse polarity and transients
- Quick-disconnect or cable versions
- Excellent LED visibility from any direction
- Enhanced diagnostic functions such as short circuit and overload indication and set-up assistance
- Permanently legible, laser-engraved serial number and part number for assured traceability



The applications of inductive sensors are numerous in many industrial markets: material handling, food & beverage, agriculture, heavy and mobile equipment as well as machine tools and packaging.

Carlo Gavazzi's inductive sensors provide a reliable and cost effective solution in machinery and automation equipment.

• **Material handling**

Carlo Gavazzi's inductive sensors are chosen to maximize efficiency and to ensure the automatic and reliable flow of goods. The triple distance ICB series, with an increased operating distance up to 40 mm, is the best solution for reliable detection in any conditions, thanks to the reduced risk of sensors breakdown, as the sensor can be positioned further away from the target.



• **Food & Beverage**

The ECOLAB certified ICS sensors are the best solution where high temperature and high pressure wash down processes are mandatory to comply with sanitary and hygienic regulations.

The materials used are FDA certified and compatible with most of the industrial cleaning and disinfecting agents or foams used in Food & Beverage applications.

• **Agriculture, heavy and mobile equipment**

Agricultural machinery, heavy and mobile equipment are exposed to difficult outdoor conditions, such as wide temperature variations, high stress due to cleaning processes. The ICS sensors provide reliable position detection of the moving parts even in such harsh environment, thanks to the solid construction and excellent tightness with certified IP68 and IP69K ratings and to the wide operating temperature.



• **Machine tools**

Inductive sensors are used to check the tool and component position in machining applications. The ICB series is the best solution thanks to its improved performance with vibrations and shocks, the reliable connection system between the cable and the barrel and the very high precision and quick response time.

Overview

Inductive sensors

A complete range of high performance inductive proximity sensors

With over 50 years of experience in manufacturing and selling proximity sensors, Carlo Gavazzi offers a wide range of inductive sensors, built to the highest-quality standards and easily customizable to specific OEM customer applications.

Inductive sensors detect all ferrous and non-ferrous metals without physical contact and provide a durable solution in harsh environments, conveying reliable signals to the PLC on the position/presence of moving parts of the machinery. They are also used for rotational speed monitoring.

They are not affected by dust, oil, water, or vibrations and they can operate at high switching frequencies without reducing their long operating life.

- **ICB Basic**

All the ICB sensors have a rugged nickel plated brass construction and feature a new generation of microprocessor, which allows final calibration of the sensor at the end of the assembly process, providing repeatable and highly accurate operation and increased EMC robustness.

- **ICB Triple distance**

The ICB is also available with an extended sensing range of up to three times the standard sensing distance, with a complete range in M12, M18 and M30 housings and advanced diagnostic LED clearly visible from any direction.

- **ICS Washdown**

The new series of ICS inductive sensors features an extremely robust design with a high grade stainless steel housing and extended operating temperature of between -40°C and +85°C (-40°F to +185°F), a superior resistance to high pressure and high temperature cleaning processes and the ability to prevent water and vapour access through the front cap or connector of the sensors.

The ICS sensors are ECOLAB certified and rated to IP67, IP68 and IP69K standards.

- **IA Miniature**

The IA05, IA06 and IA08 series are available in short and long stainless steel housings to provide a high level of mechanical protection.

They are the ideal solution where space is limited, meeting the trend of more and more compact machinery. There are quick-disconnect or cable versions.

- **IA Full metal housing**

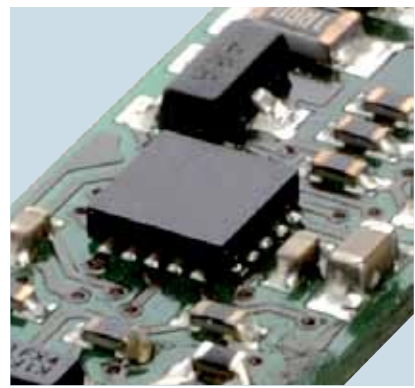
Full metal housed sensors have been specifically designed for harsh application conditions, where chemical compatibility to industrial caustic-acid conditions and mechanical resistance to impact are required.

They are available in M8, M12, M18 and M30 short or long barrel housings with one-piece stainless steel face/barrel construction.

- **Special versions**

The range is completed by a series of special versions such as:

- the EI flat pack series, ideal for use in conveying and material handling applications
- the IC/ID rectangular types suitable for the control of axial and rotational movements
- the DU slotted sensors for small part detection
- the IC40 rotatable-head switches with the sensing face adjustable to up to 5 positions
- the IA high temperature series with extended operating temperature range.



Overview

Inductive sensors

Basic series



Family	ICB12		ICB12		ICB12		ICB12	
Sensing distance, Sn [mm]	2 mm		4 mm		4 mm		8 mm	
Range	Standard		Standard		Extended		Extended	
Connection	Plug or 2m PVC cable		Plug or 2m PVC cable		Plug or 2m PVC cable		Plug or 2m PVC cable	
Mounting	Flush		Non-flush		Flush		Non-flush	
Housing	Short body	Long body	Short body	Long body	Short body	Long body	Short body	Long body
Material	Nickel-plated brass		Nickel-plated brass		Nickel-plated brass		Nickel-plated brass	
Degree of protection	IP67		IP67		IP67		IP67	
Part numbers	ICB12S30F02..	ICB12L50F02..	ICB12S30N04.	ICB12L50N04..	ICB12S30F04..	ICB12L50F04..	ICB12S30N08..	ICB12L50N08..
Operating temperature	-25 to +70°C (-13 to +158°F)		-25 to +70°C (-13 to +158°F)		-25 to +70°C (-13 to +158°F)		-25 to +70°C (-13 to +158°F)	
Approvals / Certifications	CE - cULus - cCSAus		CE - cULus - cCSAus		CE - cULus - cCSAus		CE - cULus - cCSAus	
Main feature	Microprocessor based		Microprocessor based		Microprocessor based		Microprocessor based	

Basic series



Family	ICB18		ICB18		ICB18		ICB18	
Sensing distance, Sn [mm]	5 mm		8 mm		8 mm		14 mm	
Range	Standard		Standard		Extended		Extended	
Connection	Plug or 2m PVC cable		Plug or 2m PVC cable		Plug or 2m PVC cable		Plug or 2m PVC cable	
Mounting	Flush		Non-flush		Flush		Non-flush	
Housing	Short body	Long body	Short body	Long body	Short body	Long body	Short body	Long body
Material	Nickel-plated brass		Nickel-plated brass		Nickel-plated brass		Nickel-plated brass	
Degree of protection	IP67		IP67		IP67		IP67	
Part numbers	ICB18S30F05..	ICB18L50F05..	ICB18S30N08..	ICB18L50N08..	ICB18S30F08..	ICB18L50F08..	ICB18S30N14..	ICB18L50N14..
Operating temperature	-25 to +70°C (-13 to +158°F)		-25 to +70°C (-13 to +158°F)		-25 to +70°C (-13 to +158°F)		-25 to +70°C (-13 to +158°F)	
Approvals / Certifications	CE - cULus - cCSAus		CE - cULus - cCSAus		CE - cULus - cCSAus		CE - cULus - cCSAus	
Main feature	Microprocessor based		Microprocessor based		Microprocessor based		Microprocessor based	

Basic series



Family	ICB30		ICB30		ICB30		ICB30	
Sensing distance, Sn [mm]	10 mm		15 mm		15 mm		22 mm	
Range	Standard		Standard		Extended		Extended	
Connection	Plug or 2m PVC cable		Plug or 2m PVC cable		Plug or 2m PVC cable		Plug or 2m PVC cable	
Mounting	Flush		Non-flush		Flush		Non-flush	
Housing	Short body	Long body	Short body	Long body	Short body	Long body	Short body	Long body
Material	Nickel-plated brass		Nickel-plated brass		Nickel-plated brass		Nickel-plated brass	
Degree of protection	IP67		IP67		IP67		IP67	
Part numbers	ICB30S30F10..	ICB30L50F10..	ICB30S30N15..	ICB30L50N15..	ICB30S30F15..	ICB30L50F15..	ICB30S30N22..	ICB30L50N22..
Operating temperature cable version	-25 to +70°C (-13 to +158°F)		-25 to +70°C (-13 to +158°F)		-25 to +70°C (-13 to +158°F)		-25 to +70°C (-13 to +158°F)	
Operating temperature plug version	-40 to +70°C (-40 to +158°F)		-40 to +70°C (-40 to +158°F)		-40 to +70°C (-40 to +158°F)		-40 to +70°C (-40 to +158°F)	
Approvals / Certifications	CE - cULus - cCSAus		CE - cULus - cCSAus		CE - cULus - cCSAus		CE - cULus - cCSAus	
Main feature	Microprocessor based		Microprocessor based		Microprocessor based		Microprocessor based	

Inductive sensors

Washdown series



Family	ICS12		ICS12		ICS18		ICS18	
Sensing distance, Sn [mm]	2 mm	4 mm	4 mm	8 mm	5 mm	8 mm	8 mm	12 mm
Range	Standard	Extended	Standard	Extended	Standard	Extended	Standard	Extended
Connection	Plug		Plug		Plug		Plug	
Mounting	Flush		Non-flush		Flush		Non-flush	
Housing	Long body		Long body		Long body		Long body	
Material	Stainless steel		Stainless steel		Stainless steel		Stainless steel	
Degree of protection	IP67, IP68, IP69K		IP67, IP68, IP69K		IP67, IP68, IP69K		IP67, IP68, IP69K	
Part numbers	ICS12LF02..FB	ICS12LF04..FB	ICS12LN04..FB	ICS12LN08..FB	ICS18LF05..FB	ICS18LF08..FB	ICS18LN08..FB	ICS18LN12..FB
Operating temperature	-40 ° to +80 °C (-40 to +176°F)		-40 ° to +80 °C (-40 to +176°F)		-40 ° to +80 °C (-40 to +176°F)		-40 ° to +80 °C (-40 to +176°F)	
Approvals / Certifications	CE - cULus - ECOLAB		CE - cULus - ECOLAB		CE - cULus - ECOLAB		CE - cULus - ECOLAB	
Main feature	FDA approved plastic face/µP based		FDA approved plastic face/µP based		FDA approved plastic face/µP based		FDA approved plastic face/µP based	

Washdown series



Family	ICS30		ICS30		ICS30		ICS30	
Sensing distance, Sn [mm]	10 mm	15 mm	15 mm	22 mm	10 mm	15 mm	15 mm	22 mm
Range	Standard	Extended	Standard	Extended	Standard	Extended	Standard	Extended
Connection	Plug		Plug		Plug		Plug	
Mounting	Flush		Non-flush		Flush		Non-flush	
Housing	Short body		Short body		Long body		Long body	
Material	Stainless steel		Stainless steel		Stainless steel		Stainless steel	
Degree of protection	IP67, IP68, IP69K		IP67, IP68, IP69K		IP67, IP68, IP69K		IP67, IP68, IP69K	
Part numbers	ICS30SF10..FB	ICS30SF15..FB	ICS30SN15..FB	ICS30SN22..FB	ICS30LF10..FB	ICS30LF15..FB	ICS30LN15..FB	ICS30LN22..FB
Operating temperature	-40 to +85 °C (-40 to +185°F)		-40 to +85 °C (-40 to +185°F)		-40 to +85 °C (-40 to +185°F)		-40 to +85 °C (-40 to +185°F)	
Approvals / Certifications	CE - cULus - ECOLAB		CE - cULus - ECOLAB		CE - cULus - ECOLAB		CE - cULus - ECOLAB	
Main feature	FDA approved plastic face/µP based		FDA approved plastic face/µP based		FDA approved plastic face/µP based		FDA approved plastic face/µP based	

High temperature series



Family	IA05	IA08	IA12		IA18		IA30	
Sensing distance, Sn [mm]	0.8 mm	1 mm	2 mm	4 mm	5 mm	8 mm	10 mm	15 mm
Range	Standard		Standard		Standard		Standard	
Connection	2 m silicone cable		Plug or 2 m PUR cable		Plug or 2 m PUR cable		Plug or 2 m PUR cable	
Mounting	Flush		Flush	Non-flush	Flush	Non-flush	Flush	Non-flush
Housing	Short body		Short body		Short body		Short body	
Material	Stainless steel		Nickel-plated brass		Nickel-plated brass		Nickel-plated brass	
Degree of protection	IP67		IP67		IP67		IP67	
Part numbers	IA05SF08..HTK	IA08SF08..HTK	IA12SF02..HTK	IA12SN04..HTK	IA18SF05..HTK	IA18SN08..HTK	IA30SF10..HTK	IA30SN15..HTK
Operating temperature	-25 to +120 °C (-13 to +248°F)		-40 to +100 °C (-40 to +212°F)		-40 to +100 °C (-40 to +212°F)		-40 to +100 °C (-40 to +212°F)	
Approvals / Certifications	CE		CE		CE		CE	

Inductive sensors

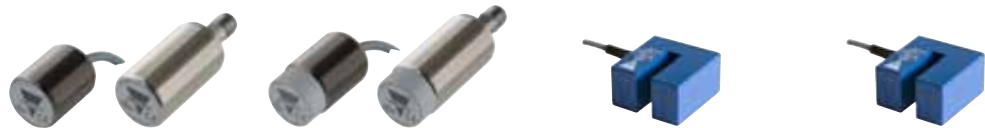
Triple distance series



Family	ICB12		ICB12		ICB18		ICB18	
Sensing distance, Sn [mm]	6 mm		10 mm		12 mm		20 mm	
Range	Triple distance		Triple distance		Triple distance		Triple distance	
Connection	Plug or 2m PVC cable		Plug or 2m PVC cable		Plug or 2m PVC cable		Plug or 2m PVC cable	
Mounting	Quasi-flush		Non-flush		Quasi-flush		Non-flush	
Housing	Short body	Long body	Short body	Long body	Short body	Long body	Short body	Long body
Material	Nickel-plated brass		Nickel-plated brass		Nickel-plated brass		Nickel-plated brass	
Degree of protection	IP67		IP67		IP67		IP67	
Part numbers	ICB12S30F06..	ICB12L50F06..	ICB12S30N10..	ICB12L50N10..	ICB18S30F12..	ICB18L50F12..	ICB18S30N20..	ICB18L50N20..
Operating temperature [°C]	-25 to +70°C (-13 to +158°F)		-25 to +70°C (-13 to +158°F)		-25 to +70°C (-13 to +158°F)		-25 to +70°C (-13 to +158°F)	
Approvals / Certifications	CE - cULus - cCSAus		CE - cULus - cCSAus		CE - cULus - cCSAus		CE - cULus - cCSAus	
Main feature	Microprocessor based		Microprocessor based		Microprocessor based		Microprocessor based	

Triple distance series

Slot type series



Family	ICB30		ICB30		DU6	DU10
Sensing distance, Sn [mm]	22 mm		40 mm		6 mm	10 mm
Range	Triple distance		Triple distance		Standard	Standard
Connection	Plug or 2m PVC cable		Plug or 2m PVC cable		2m PVC cable	2m PVC cable
Mounting	Quasi-flush		Non-flush		-	-
Housing	Short body	Long body	Short body	Long body	Slot type	Slot type
Material	Nickel-plated brass		Nickel-plated brass		ABS	ABS
Degree of protection	IP67		IP67		IP67	IP67
Part numbers	ICB30S35F22..	ICB30L50F22..	ICB30S35N40..	ICB30L50N40..	DU6E	DU10E
Operating temperature [°C]	-25 to +70°C (-13 to +158°F)		-25 to +70°C (-13 to +158°F)		-20 to +60 °C (-4 to +140°F)	-20 to +60 °C (-4 to +140°F)
Approvals / Certifications	CE - cULus - cCSAus		CE - cULus - cCSAus		CE	CE
Main feature	Microprocessor based		Microprocessor based		Namur or NPN	Namur or NPN

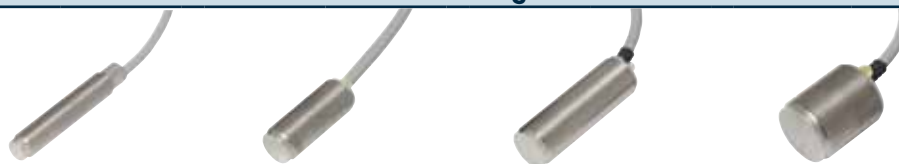
Flat pack and Rectangular series



Family	IC08	IC17	ID25	EI55	
Sensing distance, Sn [mm]	1.5 mm	4 mm	5 mm	10 mm	15 mm
Range	Standard	Standard	Standard	Standard	
Connection	Plug or 2m PVC cable	2m PVC cable	2m PVC cable	Plug or 2m PVC cable	
Mounting	Flush	Non-Flush	Flush	Flush	Non-flush
Housing	Block-shaped / square-section	Block-shaped / rectangular-section	Block-shaped / rectangular-section	Flat-pack	
Material	Nickel Plated Brass	Plastic	Nickel Plated Brass	Polycarbonate	
Degree of protection	IP65 (cable) IP67 (Plug)	IP67	IP67	IP67	
Part numbers	IC08ANC15...	IC17CNC04...	ID25ANC05...	EI5510...	EI5515...
Operating temperature [°C]	-25 to +70°C (-13 to +158°F)		-25 to +70°C (-13 to +158°F)	-25 to +70°C (-13 to +158°F)	
Approvals / Certifications	CE		CE	CE - UL - CSA	

Inductive sensors

Full metal housing series



Family	IA08F		IA12F		IA18F		IA30F	
Sensing distance, S _n [mm]	1 mm	2 mm	2 mm	4 mm	5 mm	8 mm	10 mm	15 mm
Range	Standard		Standard		Standard		Standard	
Connection	Plug or 2m PVC cable		Plug or 2m PVC cable		Plug or 2m PVC cable		Plug or 2m PVC cable	
Mounting	Flush	Non-flush	Flush	Non-flush	Flush	Non-flush	Flush	Non-flush
Housing	Short body	Long body	Short body	Long body	Short body	Long body	Short body	Long body
Material	Stainless steel		Stainless steel		Stainless steel		Stainless steel	
Degree of protection	IP67		IP67		IP67		IP67	
Part numbers	IA08FSF01...	IA08FLN02...	IA12FSF02...	IA12FLN04...	IA18FSF05...	IA18FLN08...	IA30FSF10...	IA30FLN15...
Operating temperature [°C]	-25 to +70°C (-13 to +158°F)		-25 to +70°C (-13 to +158°F)		-25 to +70°C (-13 to +158°F)		-25 to +70°C (-13 to +158°F)	
Approvals / Certifications	CE		CE		CE		CE	

Rotatable head

Miniature series



Family	IC40	IA05	IA06	IA06
Sensing distance, S _n [mm]	30 mm	1 mm	1 mm	2 mm
Range	Standard	Standard	Standard	Standard
Connection	Terminal block	Plug or 2m PVC cable	2m PVC cable	2m PVC cable
Mounting	Non-flush	Flush	Flush	Non-flush
Housing	Rectangular section	Short body	Short body	Short body
Material	Thermoplastic polyester	Stainless steel	Stainless steel	Stainless steel
Degree of protection	IP67	IP67	IP67	IP67
Part numbers	IC40CNN30...	IA05BSF10..	IA06BSF10..	IA06BSN20..
Operating temperature [°C]	-25 to +70°C (-13 to +158°F)	-25 to +70°C (-13 to +158°F)	-25 to +70°C (-13 to +158°F)	-25 to +70°C (-13 to +158°F)
Approvals / Certifications	CE	CE	CE	CE
Main feature	Rotatable head - 5 positions			

Miniature series



Family	IA08		IA08		IA08	IA08
Sensing distance, S _n [mm]	1.5 mm		2.5 mm		2 mm	4 mm
Range	Standard		Standard		Extended	Extended
Connection	Plug or 2m PVC cable		Plug or 2m PVC cable		Plug or 2m PVC cable	Plug or 2m PVC cable
Mounting	Flush		Non-flush		Flush	Non-flush
Housing	Short body	Long body	Short body	Long body	Short body	Short body
Material	Stainless steel		Stainless steel		Stainless steel	Stainless steel
Degree of protection	IP67		IP67		IP67	IP67
Part numbers	IA08BSF15..	IA08BLF15..	IA08BSN25..	IA08BLN2515..	IA08BSF20..	IA08BSN40..
Operating temperature [°C]	-25 to +70°C (-13 to +158°F)		-25 to +70°C (-13 to +158°F)		-25 to +70°C (-13 to +158°F)	-25 to +70°C (-13 to +158°F)
Approvals / Certifications	CE		CE - UL - CSA		CE - UL - CSA	CE

OUR SALES NETWORK IN EUROPE

AUSTRIA

Carlo Gavazzi GmbH
Ketzergasse 374,
A-1230 Wien
Tel: +43 1 888 4112
Fax: +43 1 889 10 53
office@carlogavazzi.at

BELGIUM

Carlo Gavazzi NV/SA
Mechelsesteenweg 311,
B-1800 Vilvoorde
Tel: +32 2 257 4120
Fax: +32 2 257 41 25
sales@carlogavazzi.be

DENMARK

Carlo Gavazzi Handel A/S
Over Hadstenvej 40,
DK-8370 Hadsten
Tel: +45 89 60 6100
Fax: +45 86 98 15 30
handel@gavazzi.dk

FINLAND

Carlo Gavazzi OY AB
Petaksentie 2-4,
FI-00630 Helsinki
Tel: +358 9 756 2000
Fax: +358 9 756 20010
myynti@gavazzi.fi

FRANCE

Carlo Gavazzi Sarl
Zac de Paris Nord II, 69, rue de la Belle Etoile,
F-95956 Roissy CDG Cedex
Tel: +33 1 49 38 98 60
Fax: +33 1 48 63 27 43
french.team@carlogavazzi.fr

GERMANY

Carlo Gavazzi GmbH
Pfnorstr. 10-14
D-64293 Darmstadt
Tel: +49 6151 81000
Fax: +49 6151 81 00 40
info@gavazzi.de

GREAT BRITAIN

Carlo Gavazzi UK Ltd
4.4 Frimley Business Park,
Frimley, Camberley, Surrey GU16 7SG
Tel: +44 1 276 854 110
Fax: +44 1 276 682 140
sales@carlogavazzi.co.uk

ITALY

Carlo Gavazzi SpA
Via Milano 13,
I-20020 Lainate
Tel: +39 02 931 761
Fax: +39 02 931 763 01
info@gavazziacbu.it

NETHERLANDS

Carlo Gavazzi BV
Wijkermeerweg 23,
NL-1948 NT Beverwijk
Tel: +31 251 22 9345
Fax: +31 251 22 60 55
info@carlogavazzi.nl

NORWAY

Carlo Gavazzi AS
Melkeveien 13,
N-3919 Porsgrunn
Tel: +47 35 93 0800
Fax: +47 35 93 08 01
post@gavazzi.no

PORTUGAL

Carlo Gavazzi Lda
Rua dos Jerónimos 38-B,
P-1400-212 Lisboa
Tel: +351 21 361 7060
Fax: +351 21 362 13 73
carlogavazzi@carlogavazzi.pt

SPAIN

Carlo Gavazzi SA
Avda. Iparraguirre, 80-82,
E-48940 Leioa (Bizkaia)
Tel: +34 94 480 4037
Fax: +34 94 431 6081
gavazzi@gavazzi.es

SWEDEN

Carlo Gavazzi AB
V:a Kyrkogatan 1,
S-652 24 Karlstad
Tel: +46 54 85 1125
Fax: +46 54 85 11 77
info@carlogavazzi.se

SWITZERLAND

Carlo Gavazzi AG
Verkauf Schweiz/Vente Suisse
Sumpfstrasse 3,
CH-6312 Steinhausen
Tel: +41 41 747 4535
Fax: +41 41 740 45 40
info@carlogavazzi.ch

OUR SALES NETWORK IN THE AMERICAS

USA

Carlo Gavazzi Inc.
750 Hastings Lane,
Buffalo Grove, IL 60089, USA
Tel: +1 847 465 6100
Fax: +1 847 465 7373
sales@carlogavazzi.com

CANADA

Carlo Gavazzi Inc.
2660 Meadowvale Boulevard,
Mississauga, ON L5N 6M6, Canada
Tel: +1 905 542 0979
Fax: +1 905 542 22 48
gavazzi@carlogavazzi.com

MEXICO

Carlo Gavazzi Mexico S.A. de C.V.
Calle La Montaña no. 28, Fracc. Los Pastores
Naucalpan de Juárez, EDMEX CP 53340
Tel & Fax: +52.55.5373.7042
mexicosales@carlogavazzi.com

BRAZIL

Carlo Gavazzi Automação Ltda. Av.
Francisco Matarazzo, 1752
Conj 2108 - Barra Funda - São Paulo/SP
Tel: +55 11 3052 0832
Fax: +55 11 3057 1753
info@carlogavazzi.com.br

OUR SALES NETWORK IN ASIA AND PACIFIC

SINGAPORE

Carlo Gavazzi Automation Singapore Pte. Ltd.
61 Tai Seng Avenue #05-06
Print Media Hub @ Paya Lebar iPark
Singapore 534167
Tel: +65 67 466 990
Fax: +65 67 461 980
info@carlogavazzi.com.sg

MALAYSIA

Carlo Gavazzi Automation (M) SDN. BHD.
D12-06-G, Block D12,
Pusat Perdagangan Dana 1,
Jalan PJU 1A/46, 47301 Petaling Jaya,
Selangor, Malaysia.
Tel: +60 3 7842 7299
Fax: +60 3 7842 7399
sales@gavazzi-asia.com

CHINA

Carlo Gavazzi Automation
(China) Co. Ltd.
Unit 2308, 23/F.,
News Building, Block 1, 1002
Middle Shennan Zhong Road,
Shenzhen, China
Tel: +86 755 83699500
Fax: +86 755 83699300
sales@carlogavazzi.cn

HONG KONG

Carlo Gavazzi Automation
Hong Kong Ltd.
Unit 3 12/F Crown Industrial Bldg.,
106 How Ming St., Kwun Tong,
Kowloon, Hong Kong
Tel: +852 23041228
Fax: +852 23443689

OUR COMPETENCE CENTRES AND PRODUCTION SITES

DENMARK

Carlo Gavazzi Industri A/S
Hadsten

MALTA

Carlo Gavazzi Ltd
Zejtun

ITALY

Carlo Gavazzi Controls SpA
Belluno

LITHUANIA

Uab Carlo Gavazzi Industri Kaunas
Kaunas

CHINA

Carlo Gavazzi Automation (Kunshan) Co., Ltd.
Kunshan

HEADQUARTERS

Carlo Gavazzi Automation SpA
Via Milano, 13
I-20020 - Lainate (MI) - ITALY
Tel: +39 02 931 761
info@gavazziautomation.com



CARLO GAVAZZI
Automation Components

Energy to Components!

www.gavazziautomation.com

